



# COMMUNITY PROFILE

English

**Haneda Airport** ⇐ 120min ⇒ **Fukuoka Airport**  
[From Fukuoka Airport to JR Kurume Station: 25 minutes by subway and Shinkansen.]

**Take the Kyushu Shinkansen to JR Kurume Station**

From <b>Hakata</b>	15min
From <b>Kumamoto</b>	20min
From <b>Kagoshima-Chuo</b>	70min
From <b>Shin-Osaka</b>	180min

\*Each time required is the shortest time without transfers.

**Kurume IC** ⇐ 5min ⇒ **Kurume Research Park Co.**



Executive office Kurume Research Park Co.,Ltd  
〒839-0864 1-1 Hyakunen Koen, Kurume-shi, Fukuoka  
TEL.0942-37-6124 FAX.0942-37-6367





## VISION

# Creating the future of global health, Bio-business from Kurume-city, Fukuoka.

Fukuoka is the gateway to Asia and home to Japan's leading research institutions and industries.

Fukuoka Biocommunity will create the future of global health for generations to come by fostering industries of drug discovery and food products to better human health and lives,

Our mission is to create companies and the ecosystem that lead the bio-industry through collaboration between industry, academia, government, and finance sectors.

Research,business,industry,community,society...

We are committed to creating a community that aims to create a new bio-business ecosystem that will grow all of these areas and we will continue to contribute to the improvement of quality of life around the world and the evolution of wellness and wellbeing...

..to become a leading center of bio-research in Japan.



FUKUOKA PREFECTURE

Fukuoka, the Gateway to Asia

Fukuoka has long served as a gateway between Japan and Asia.  
Tourism and business exchanges are thriving.  
Fukuoka has an extensive land, sea, and air transportation network,  
providing easy access to major cities in Japan and Asia.

- Within 2 hours to major cities in Japan and Asia
- 500km to Osaka and Seoul
- 1000km to Tokyo and Shanghai

2-3000 km to cover major cities in APAC



About Fukuoka Biocommunity Overview

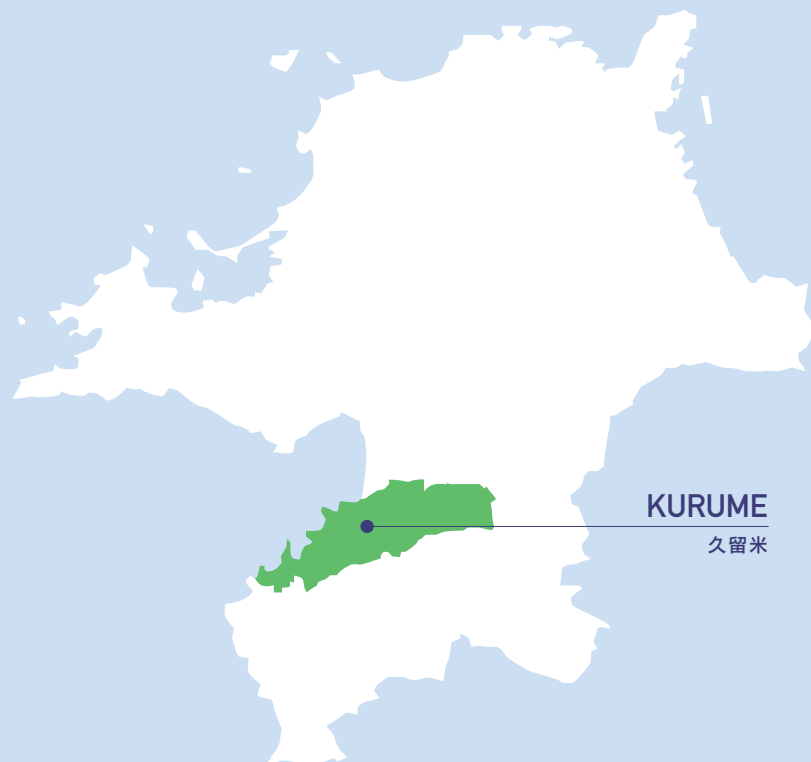
## KURUME CITY

# Biotech Hub

The southern region of Fukuoka Prefecture has long had a thriving bio-industry, especially in Kurume City, which is the third largest city in the prefecture. Kurume City also has a concentration of medical universities and research institutes.

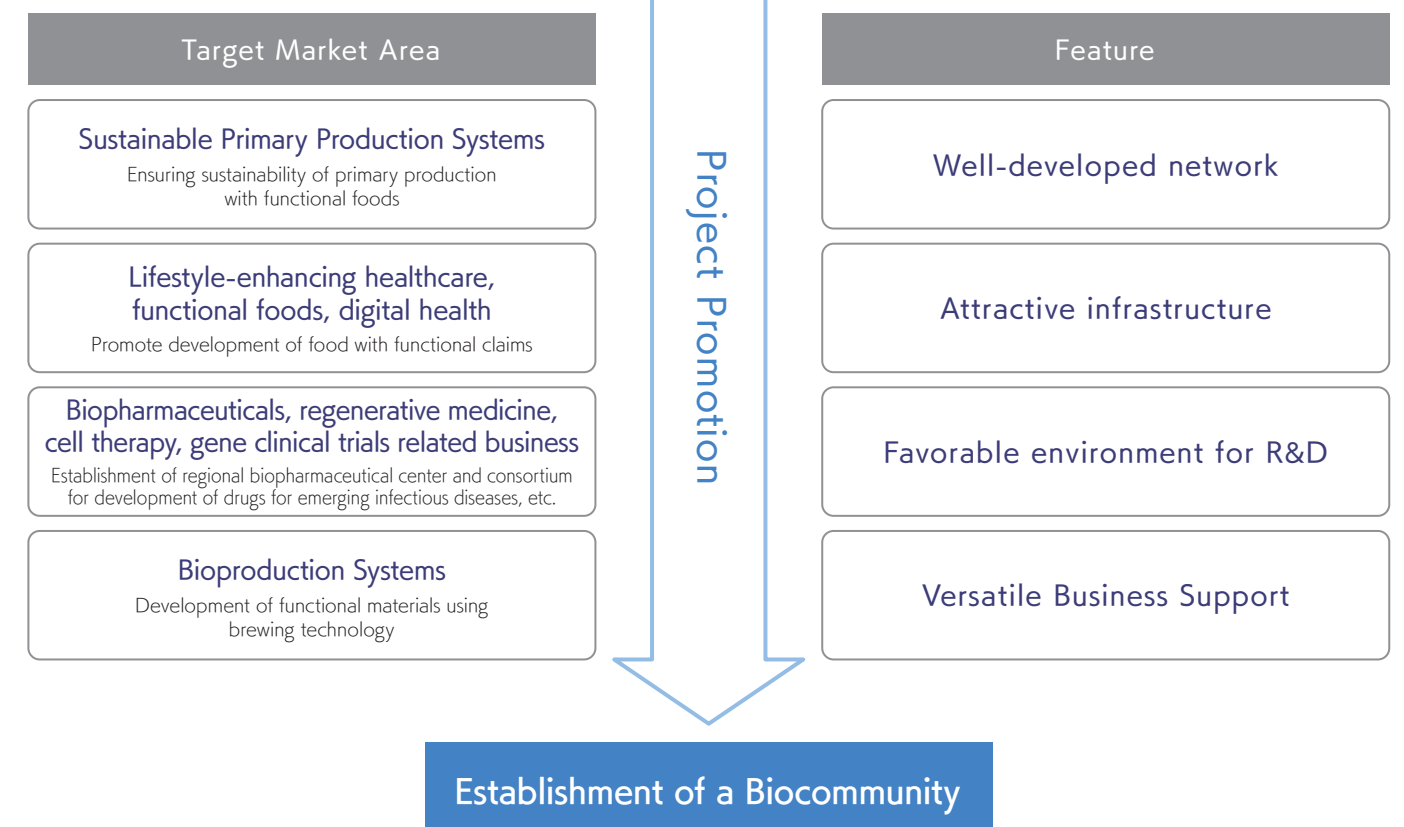
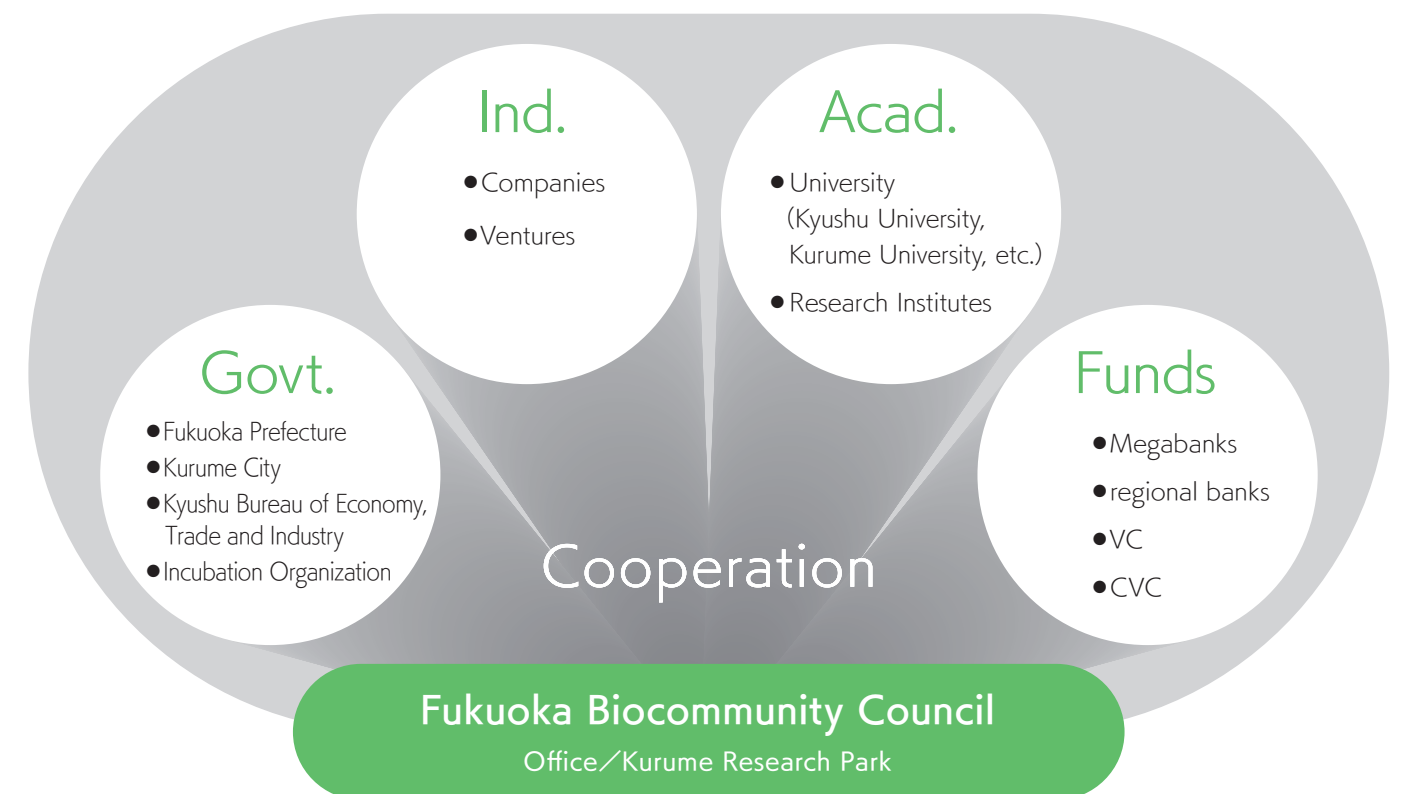
Fukuoka Prefecture and Kurume City have been promoting the establishment of a bio-industry base in the region centered on Kurume City since 2001.

- Formation of Fukuoka Biocommunity centered on Kurume City
- Certified in June 2021 as the first "Regional Biocommunity" based on the national bio-strategy.



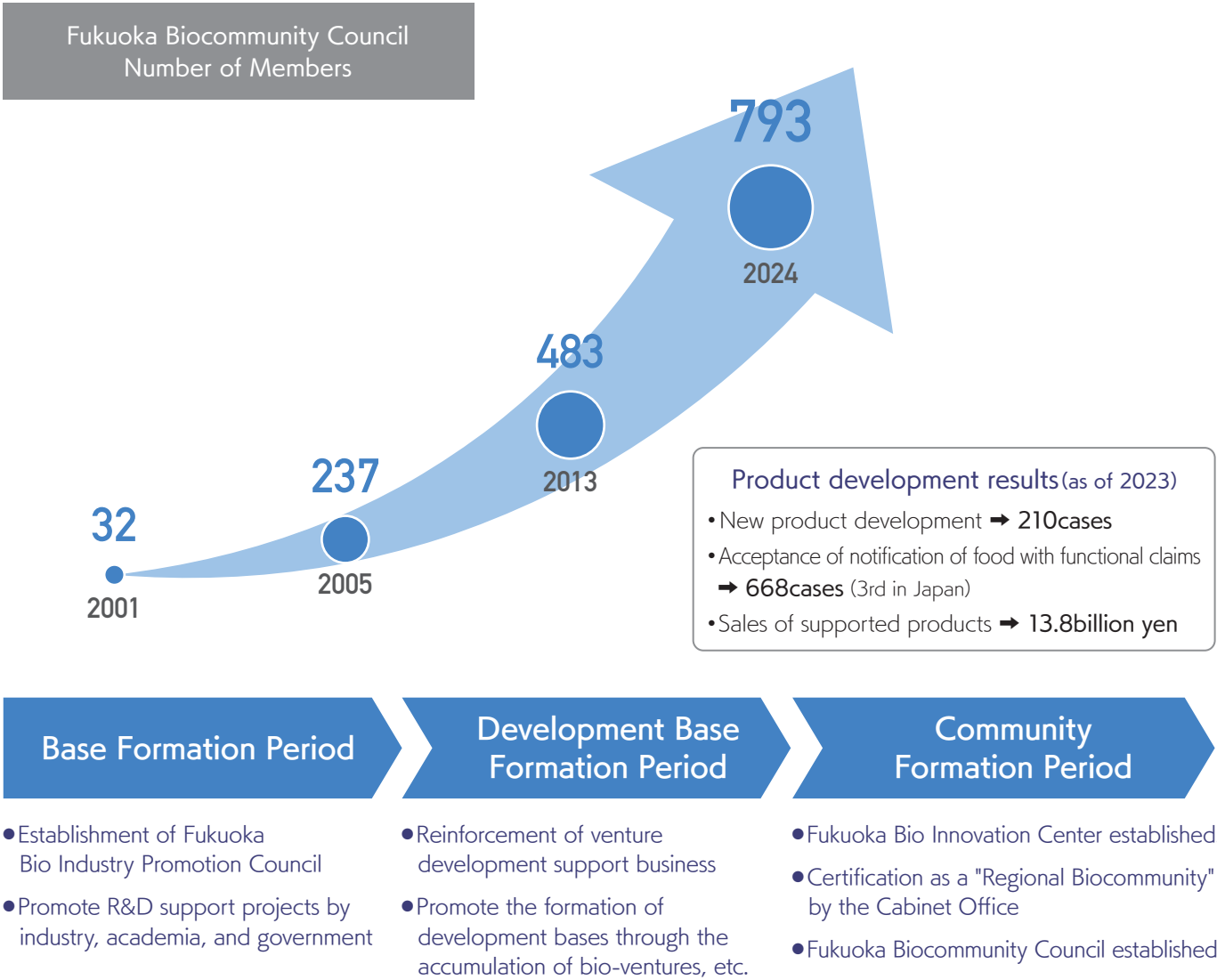
## OUR TEAM

Working with various players to create the future of Fukuoka Biocommunity



HISTORY

As the first "Regional Biocommunity" in Japan, we will produce biotech businesses that will lead the world.



The "Four Characteristics" of Fukuoka Biocommunity

What is Fukuoka Biocommunity?

01

Well-developed Network

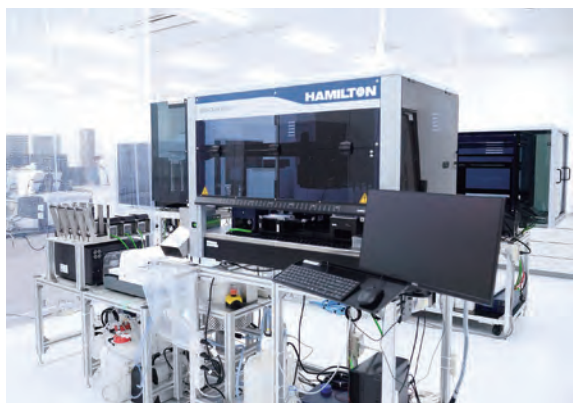
- We have a large network of universities, biotechnology-related companies, and other organizations that can help companies commercialize their products.
- Access to facilities of affiliated universities and research institutes at low cost.



02

Attractive infrastructure

- Incubation facilities for bio-venture development.
- Access to open laboratories with state-of-the-art equipment.



03

Favorable environment for R&D

- A full menu of support services for research and business development.
- We are developing a platform business to support various research and development activities.



04

Versatile Business Support

- Experienced advisors are available to assist you.
- Support for fundraising is available.



FEATURES  
Fukuoka Biocommunity Proudly Supports

ヒト  
PEOPLE

モノ  
FACILITIES

カネ  
MONEY

チエ  
KNOWLEDGE

The efforts to date have yielded certain results, including a concentration of biotechnology-related companies, the creation of unique leading companies, and the development of original food with functional claims.

We will take advantage of the certification as a regional biocommunity to attract diverse players and build a bio-ecosystem that enables a virtuous cycle of people, goods, and money, and to organically link with the biocommunity in Kyushu and other prefectures in Japan and abroad.

We aim to create a leading biocommunity in Japan.



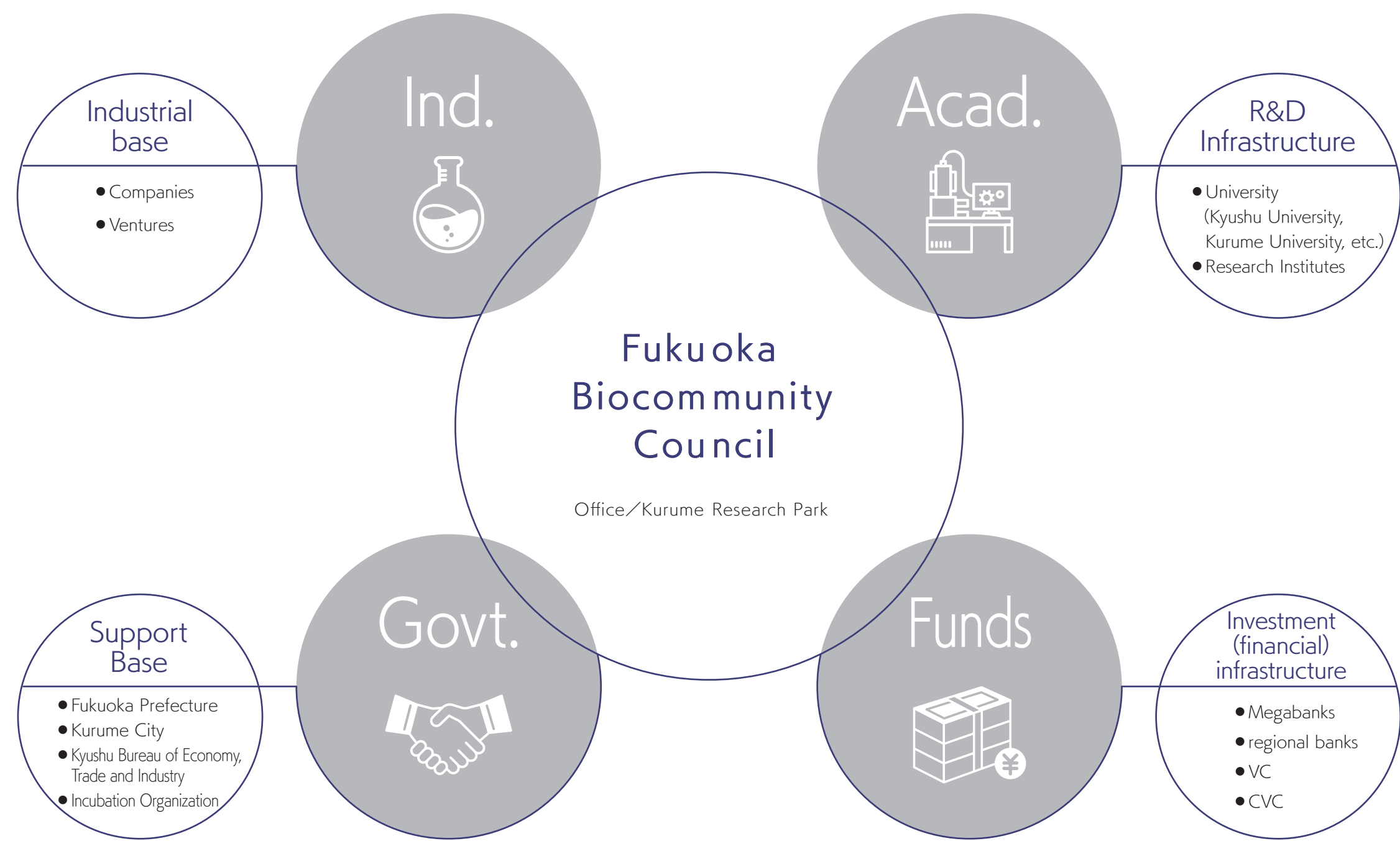
01

Well-developed  
Network



NETWORK

Supporting the growth of companies through  
a strong network foundation of industry,  
academia, government, and funding

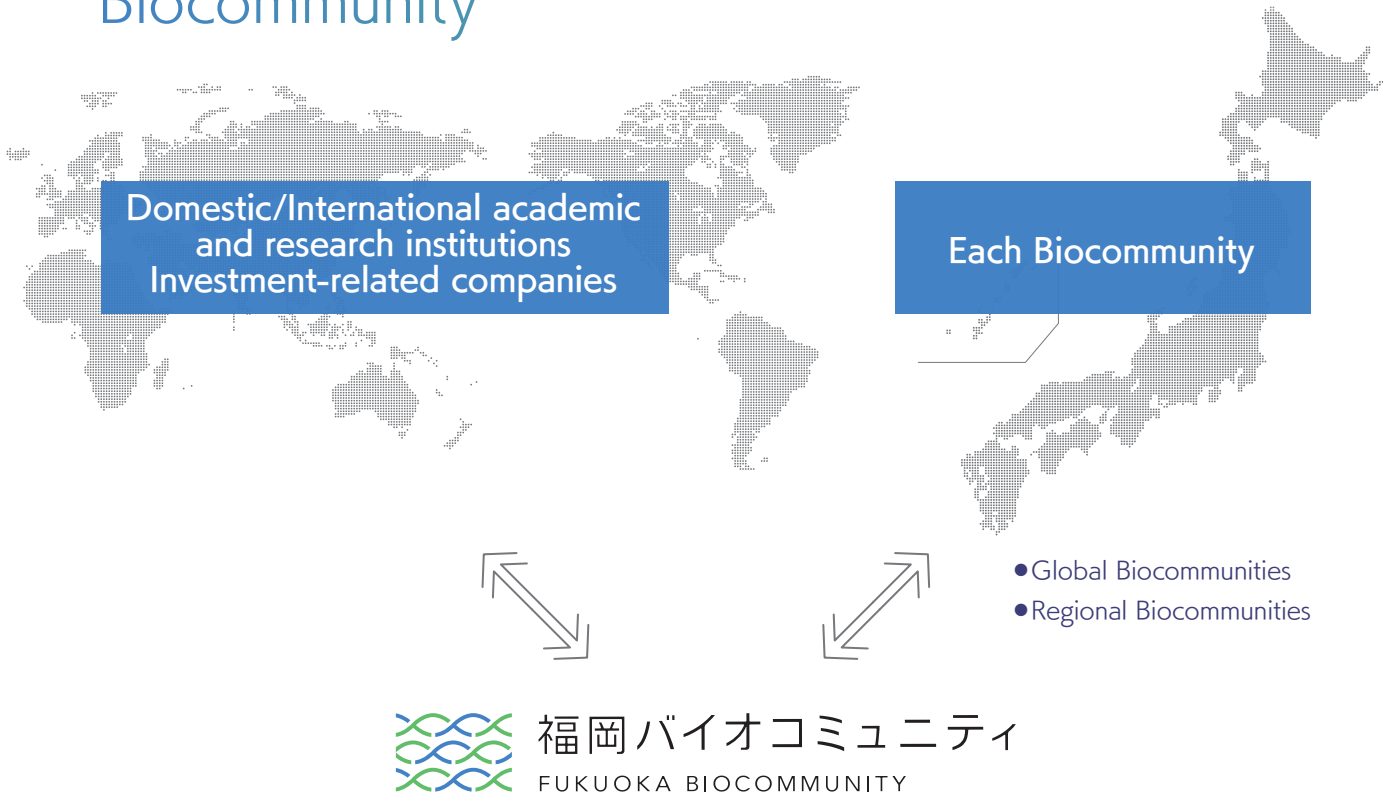


Fukuoka Biocommunity Council, consisting of industry, academia, government, and funding, implements comprehensive projects to promote the development of the community, focusing on R&D support, venture development, human resource development, exchange and collaboration, and dispatch of information.



NETWORK

Strengthening Collaboration with Internal and External Organizations to Build Japan's Leading Biocommunity



Collaboration with Research Institutes

Private sector companies can also use it at a lower cost



Kurume University School of Medicine  
Institute for Disease Modeling



Fukuoka Prefecture  
Biotechnology and Food Research Institute

Cooperation with Local Universities

Promote R&D support and human resource development based on agreement



02  
Attractive infrastructure

INSTITUTION

Well-equipped incubation facilities and open labs

Kurume Research Park, part of Fukuoka Biocommunity, has four incubation facilities for biotechnology R&D and two open laboratories where expensive experimental and analytical equipment can be used on an hourly basis.

In addition to its excellent security and other facilities, the property is located in Kurume Hyakunen Park, surrounded by nature and offering a bright and open atmosphere.

Incubation Facilities at Kurume Research Park Inc.

Fukuoka Bio Innovation Center



【Opened】 April, 2021

【Outline】 Total floor space: 1,758㎡  
5 floors  
12 rooms  
Open Lab  
Conference rooms

Fukuoka Bio Factory



【Opened】 April, 2007

【Outline】 Total floor space: 2,219㎡  
4 floors  
15 rooms  
Meeting room

Fukuoka Bio Incubation Center



【Opened】 April, 2004

【Outline】 Total floor space: 1,365㎡  
4 floors  
17 rooms  
Meeting room

R&D Building



【Opened】 April, 1989

【Outline】 Total floor space: 3,935㎡  
3 floors  
33 rooms  
Open Lab  
Conference rooms



EQUIPMENT

Unparalleled in Accelerators  
Approximately 100 types of  
state-of-the-art equipment

The Open Lab located in Kurume Research Park is equipped with experimental and analytical equipment that is difficult for individual venture companies to install, and companies in the community can use it at a low cost. Technical staff members are stationed in the lab to provide support for everything from equipment usage to research consultations.

Example of equipment



Automatic pipetting machine (StarLET) HAMILTON



UHPLC (Nexera 2) SHIMADZU



Automated Cell Imaging System (ImageXpressPico) MOLECULAR DEVICES



LC-MS (6495 Triple Quad LC/MS) Agilent Technologies



ICP-MS (7900 ICP-MS) Agilent Technologies



Electron Probe Micro Analyzer (EPMA-1720) SHIMADZU



Cell Sorter (FACSMelody) BectonDickinson



Gel Imaging System (ChemiDoc Touch) BIO-RAD



Thermal Cyclers (TOne96G) Biometra



Digital Fluorescence Microscope (BZ-X800L) KEYENCE

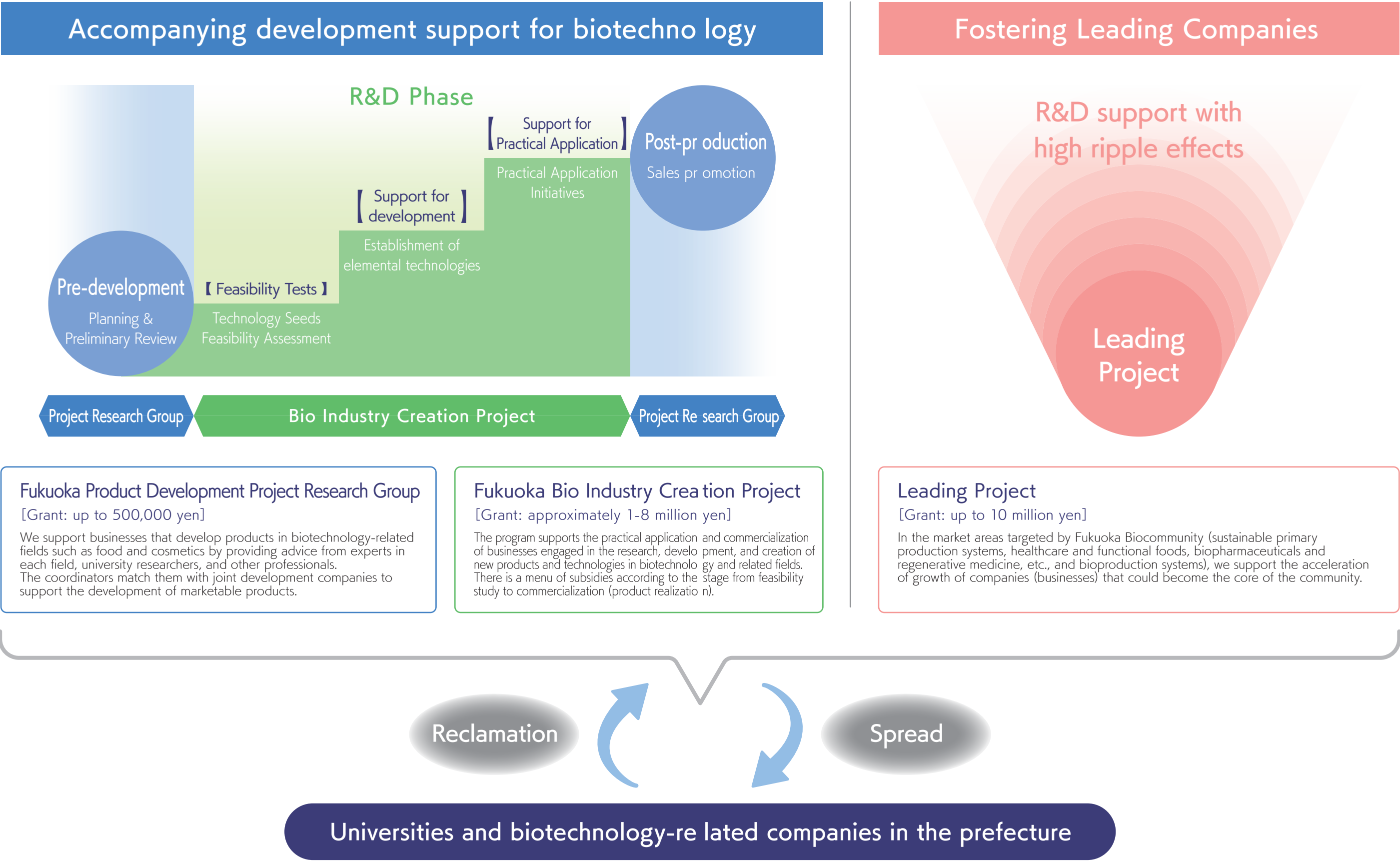
Other bio-related research equipment  
Real-time PCR, nucleic acid extraction device, fully automatic electrophoresis device, safety cabinet, autoclave, jar fermentor, trace spectrophotometer, FT-IR, various centrifuges, various optical microscopes



03  
Favorable environment  
for R&D




Substantial R&D grants “End-to-end support from the seed stage to commercialization.”



# Comprehensive Research and Development Platform

Three platform businesses are being developed to create a structure that will serve as a foundation for technological development that will lead to the enhancement of innovative materials, production technology and capabilities



## Orphan Drug Development


We support the process from R&D to commercialization of orphan drugs that are highly needed in the medical community.

**Kurume University**

Clinical Research Center    Faculty of Medicine Pediatrics    Center for Disease Model Research

Domestic Seeds → Domestic Ventures SMEs

**Orphan Drug Development Platform**  
Orphan Drug Development Support (Providing disease information and advice)




## Genome Editing Industrialization

We are providing an environment that enables venture companies and local SMEs to easily utilize genome editing technology, supporting R&D such as improving the productivity of beneficial compounds and new materials using plants.

Genome Editing Plant Development Process

Supportive Services	Required Period
Consultation Application	2 Weeks
Investigation of Target Genes	1 Month
Building Genome Editing Tools	1 to 4 Months
Establishment of Genome Editing experimental systems	Approx. 7 Months
Genome Editing	Approx. 6 Months
Practical Application Support	Approx. 6 Months



## Functional Food Development

We provide support for companies aiming to submit notifications for food with functional claims, ensuring smooth procedures from pre-notification consultations to screening and preliminary checks of notification documents.

Flow of Fukuoka Functional Foods Support System

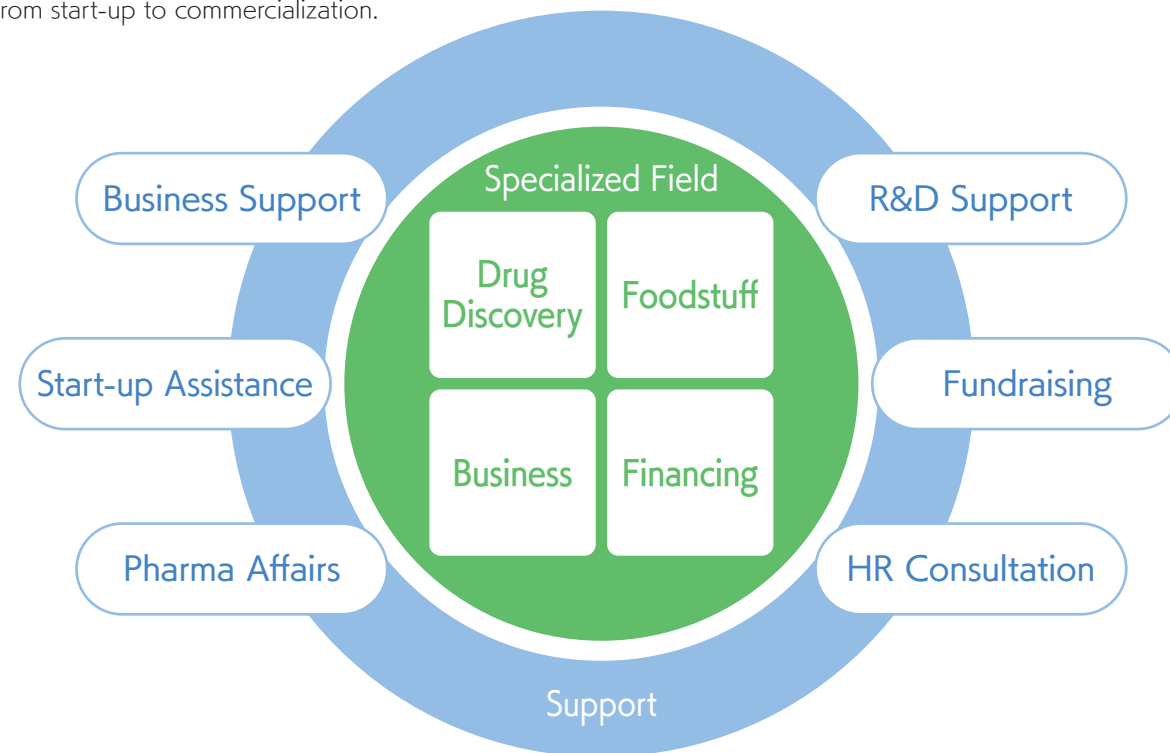
	Consultation	Product Evaluation	SR Clinical Trial	Report
System Process	Application for Consultation Service Consultation Service	Survey Implementation Reporting of survey results	SR (Research Review) or Clinical Trial	Third-party Review of the Entire Submission Documentation
Required Period	Approx. 2 Weeks	Approx. 2 Months	SR: Approx. 3 Months Clinical Trials: Approx. 7 months	Approx. 1 Week



04  
Versatile Business Support

## Support by Specialist Advisors

Access to a variety of specialist advisors who provide detailed support as the bio-venture develops, from start-up to commercialization.



## Acceleration Program

The program specializes in the life science field (drug discovery, regenerative medicine, medical devices, etc.) and supports early social implementation of promising technology seeds by researchers and start-ups.



## Exhibition Support

We support the participation in large-scale exhibitions and other events to promote the sale of biotechnology-related products in Japan and overseas and to expand business opportunities.

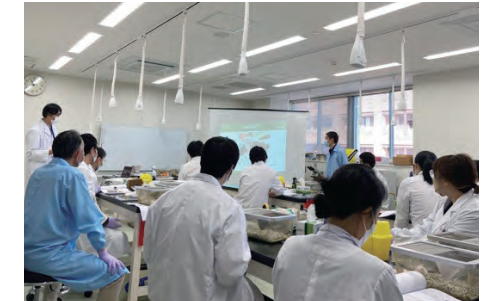
- BioJapan
- Food Development Exhibition
- Fukuoka Functional Foods and Healthcare Products Exhibition and Business Meeting



## Human resource development through technical seminars

By regularly holding technical seminars and workshops that can be attended for a small fee, we develop human resources for companies by providing them with specialized knowledge and an understanding of the latest trends in the industry.

- Safety Seminar for Genetic Recombination Experiments
- Practical Training for Animal Experiments
- Study Group for Notification of Foods with Functional Claims



## Dispatch of information

We hold events and disseminate information on our website and other media as a place for companies to present and publicize their achievements.

- Fukuoka Biocommunity Council General Meeting
- Tokyo Symposium
- Information Dissemination via the Web







## Companies in Fukuoka Biocommunity

### Companies in Drug Discovery and Development



#### **CUBICStars**

**CUBICStars, Inc.**  
(Kurume City)

University of Tokyo and RIKEN Spin-off Venture  
Construction of cellular maps of whole organs using  
tissue transparency techniques.



**EditForce, Inc.**  
(Fukuoka City)

Kyushu University Venture  
Possessing Essential Domestic Genome Editing Technology  
for Smart Cells. Developing Pharmaceuticals and  
High-Performance Materials Utilizing This Technology



**FELIQS Corp.**  
(Kurume City)

Kyushu University Venture  
Based on the control of oxidized lipid formation  
Practical Application of Drugs for Rare Diseases



**KAICO Ltd.**  
(Fukuoka City)

Kyushu University Venture  
R&D of production of raw materials for  
pharmaceuticals and other products using KAICO



**VLP Therapeutics Japan, Inc.**  
(Tokyo)

R&D of replicon vaccines against novel  
coronavirus infection (COVID-19), etc.  
Establishment of an investigational vaccine  
manufacturing facility in Kurume, Japan.

Companies  
Developing  
Functional Foods,  
etc.



**Agricultural Producers' Cooperative Corp.  
Fukuei Kumiai** (Kurume City)

Production and sales of Hakata Jidori chicken.  
Japan's first fresh meat product to be accepted for  
notification as a food with functional claims that is  
effective in preventing dementia.

Other  
Healthcare-related  
Companies



**ACCELStars, Inc.**  
(Kurume City)

Venture launched by the University of Tokyo and RIKEN  
A Medical Sleep Tech company dedicated to  
the prevention, diagnosis, and treatment of  
"brain and mental" diseases such as mental disorders,  
neurodegenerative diseases, and developmental disorders



**Aishitōto Co.,Ltd**  
(Nakagawa City)

Manufacturer and distributor of health foods and  
other products. Notification and sales of functional  
food "Memory Declaration" (supports memory).



**Best Amenity Co.,Ltd**  
(Kurume City)

Joint research with Kurume University and  
Kyushu University on functional food development  
underway. Developing high value-added products,  
mainly food-related products.



**Gmep, Inc.**  
(Kurume City)

Fukuoka Bio Innovation Center tenant company,  
cell culture support service using serum-free,  
fully synthetic culture media



**Healthcare Systems Co.,Ltd**  
(Nagoya City)

Nagoya University Venture  
Development and provision of postal examination  
services in the area of pre-disease using proprietary  
research techniques



**Shin Nihon Pharmaceutical Co.,Ltd**  
(Fukuoka City)

Manufacturer and distributor of pharmaceuticals  
and cosmetics. Notified and currently marketing  
"Lutein Eye Berry" (for eye conditioning), a food  
with functional claims.



**Kanesada Corp.**  
(Kurume City)

Processing and sales of dried shiitake mushrooms  
and other mushrooms, with notification of food with  
functional claims of dried shiitake mushrooms with  
GABA as a functionally active ingredient, now on sale.



**Japan Bio Products Co.,Ltd**  
(Tokyo)

The world's leading company in placenta research  
and product development using human placenta  
as raw material



**Kyushu Medical Co.,Ltd**  
(Kitakyushu City)

Development of fungicides utilizing  
microorganisms, development of  
functional feeds, etc.